

Representative Policy Board
Land Use Committee
South Central Connecticut Regional Water Authority
Lake Saltonstall Water Treatment Plant, 1 Saltonstall Parkway, East Haven, CT

AGENDA

Regular Meeting of Wednesday, July 8, 2026, at 5:30 p.m.

1. Safety Moment
2. Public Comment: Residents and customers may address the Land Use Committee regarding agenda items or other issues. Discussion is limited to the presentation of information for consideration and comment on agenda items.
3. Approval of Minutes – June 10, 2026 regular meeting
4. Water Chestnut Harvest Update: Will Henley
5. Updates on land and RWA properties, including invasive species update
6. Other land items
7. Elect Committee Chair for 2026-2027
8. Next regular meeting - Wednesday, August 12, 2026 at 5:30 p.m.
9. Adjourn

Members of the public may attend the meeting in person. In the event of rain, the meeting will be held in person at 90 Sargent Drive, New Haven. To view meeting documents, please visit <https://tinyurl.com/3ffzccnu>. For questions, contact the board office at 203-401-2515 or by email to jslubowski@rwater.com.

SAFETY MOMENT

UV Safety Awareness

UV Safety awareness emphasizes protecting your skin and eyes from harmful ultraviolet (UV) radiation to prevent skin cancer, premature aging, and eye damage.

PRACTICAL SUN SAFETY TIPS:

1. Apply sunscreen with SPF 30 or higher every day, even cloudy days
2. Wear protective clothing when in the sun
3. Limit direct sun exposure by seeking shade, especially between 10 am and 4 pm
4. Avoid tanning beds
5. Monitor your skin for unusual moles or changes and consult a dermatologist for early detection of skin cancer

Tap Into
Safety



Regional Water Authority



Service – Teamwork – Accountability – Respect – Safety

 Regional Water Authority

Representative Policy Board
Land Use Committee
 South Central Connecticut Regional Water District
 June 10, 2026

Minutes

The regular meeting of the Land Use Committee (“Committee”) of the Representative Policy Board (“RPB”), of the South Central Connecticut Regional Water District (“RWA”), took place on Wednesday, June 10, 2026, at the Madison Slash Wall, Route 42, Madison, Connecticut. Chair Levine presided.

Committee Members Present: M. Levine, P. Betkoski, P. DeSantis, B. Eitzer, G. Malloy, and J. Mowat Young

RPB: R. Harvey, N. Campbell, and C. Havrda

Authority: D. Borowy and C. LaMarr

Management: J. Hill, V. Benni, J. Triana, J. Tracy, and C. Cordes

Chair Levine called the meeting to order at 5:30 p.m. He reviewed the Safety Moment distributed to members.

Mr. Tracy, the RWA’s Forester II – Drone Manager, and Mr. Cordes, the RWA’s Forester II, provided an update on the Madison Slash Wall/Connecticut Agricultural Experiment Station (CAES) study, initiated in the early 1980s to evaluate differences in forest harvesting methods and the influence of regeneration, stand growth, and carbon storage. Over time, the project progressed to examine additional ecological factors, including soil property dynamics and belowground carbon processes. The study continues to evolve, providing valuable insights into forest ecosystem responses and sustainable management practices.

Mr. Tracy and Mr. Cordes reported on the implementation of the slash wall in 2021, which uses logging residue to create barriers around regenerating stands to deter deer. The approach offers a low-cost alternative to fencing and protects seedlings until they grow beyond browsing height, after which the structures naturally decompose.

They highlighted that early results indicate that the slash walls are improving regeneration, with a 40% higher density of tall seedlings within protected areas after three years. These areas also show an increased presence of desirable species such as oaks and hickories, along with fewer non-native species compared to unprotected areas.

Update on *The Land We Need for the Water We Use Program* – Mr. Triana, the RWA’s Real Estate Manager, reported:

Reservoir Levels (Percent Full)

	Current Year	Previous Year	Historical Average	Drought Status
May 31	88%	98%	93%	None

Rainfall (inches)

	Current Year	Previous Year	Historical Average
May 31	2.84	6.74	3.94
Fiscal YTD (6/1/24 –	29.58	43.56	46.48

Land We Need for the Water We Use Program (Dispositions/Acquisitions)

- Madison – correspondence with property owner of 14+/- acres.
- Durham – correspondence with property owner of 6+/- acres.
- Cheshire, Fenn Rd. easement – Emailed Town Manager and others about the OSWLA grant money.
- Woodbridge, Baldwin easement – Baldwin’s are in general agreement to grant an on-foot access easement to our land that is east of the Wepawaug River.
- Ansonia, 119 ½ Ford St. – Staff found Ford St. Tank site locked by the USFS. RWA Police found contact person who allowed our lock to go in sequence at the gate. Emailed two USFS contacts since it seems that they will be divesting themselves of the property. We have a 50-year easement for the tank plus an option to extend it for another 50 years. We are in year 33 of the original easement.

Rental houses:

- Hamden, 233 Skiff St. – Bids were opened. Bayram’s had the highest bid of \$40,000.
- Woodbridge, 1029 Johnson Rd. – Received update of the plans being negotiated between the owner’s and their potential buyer.

Forestry Update

- Installed 500 tree shelters around tree seedlings planted recently in Branford.
- Attended a roundtable with Senator Chris Murphy to discuss the US Forest Service’s planned reorganization and closure of Connecticut’s and New England’s research and outreach facilities and offices.
- Investigated sourcing mile-a-minute weevils for an infestation in Prospect.
- Inspected witch hazel harvesting and approved the removal and re-installation of timber mats at a new intermittent watercourse crossing.

Recreation

- Held forest ecology walk at Rt. 42, Bethany with 18 participants.
- Kids fishing derby was held at Maltby Lakes with 13 participants.
- The Water Wagon attended four events in May.

	May		April	
	2026	2025	2026	2025
Permit Holders	5,106	4,979	5,037	4,974

Special Activity Permits

- (no permits were issued in May)

Other items

- Encroachments/agreements –
 - Agricultural agreements – Talked to tenant interested in the Beaver Head Rd. field. Signed amendment of agreement with tenant for the field at Downs Rd., Hamden.
 - Madison, 752 Summer Hill Rd. (MA 9) – Abutter contacted us again about permission for Eversource to run the line after the conduits were moved. We repeated that we would not authorize anything until the matter was settled. Meeting between lawyers and surveyors was not attended by Anderson.

- North Branford, 217 Forest Rd. (NB 17) – Signed license agreement with new owner for the encroachments over the property line.
- Bethany, Hoadley Rd. (BE 17 & 18) – Abutter said they would remove the well pipe.
- Madison, unauthorized trails (MA 2) – Sent letters to five abutters of the Cedar Swamp property about the unauthorized trails and some objects on our land.
- Invasive plants – Treated or documented invasive plant populations in North Branford and East Haven. Assisted Connecticut Butterfly Association effort to eliminate garlic mustard off of Reeds Gap Rd., Northford. Sprayed invasive plants, including mugwort and swallowwort, at the Furnace Pond shoreline restoration project area. Contractor for barberry control at Gaillard.

Invasive Species Documented/ Mapped (ac)	0.5 acres
Invasive Species Treated (ac/MH)	3.4 acres

- Land Use Plan – RPB approved the LUP update.
- New Haven, Edgerton Park wall (HA 1) – City, RWA, and beekeeper coordinated with the contractor.
- Deer hunt – Lottery for hunters was run. DPH sent approval for the amended permit for the deer hunt, extending the hunt period from October 9 to December 31.

There were no other land items to report.

Chair Levine reported that next month’s meeting would include the annual election of the committee chair.

The next regular meeting is Wednesday, July 8, 2026, at 5:30 p.m.

At 6:35 p.m., on motion made by Mr. Malloy and seconded by Mr. Betkoski, the Committee voted to adjourn the meeting.

Mark Levine, Chair

Water Chestnut (*Trapa natans*) Management Update

Land Use Committee February 2026

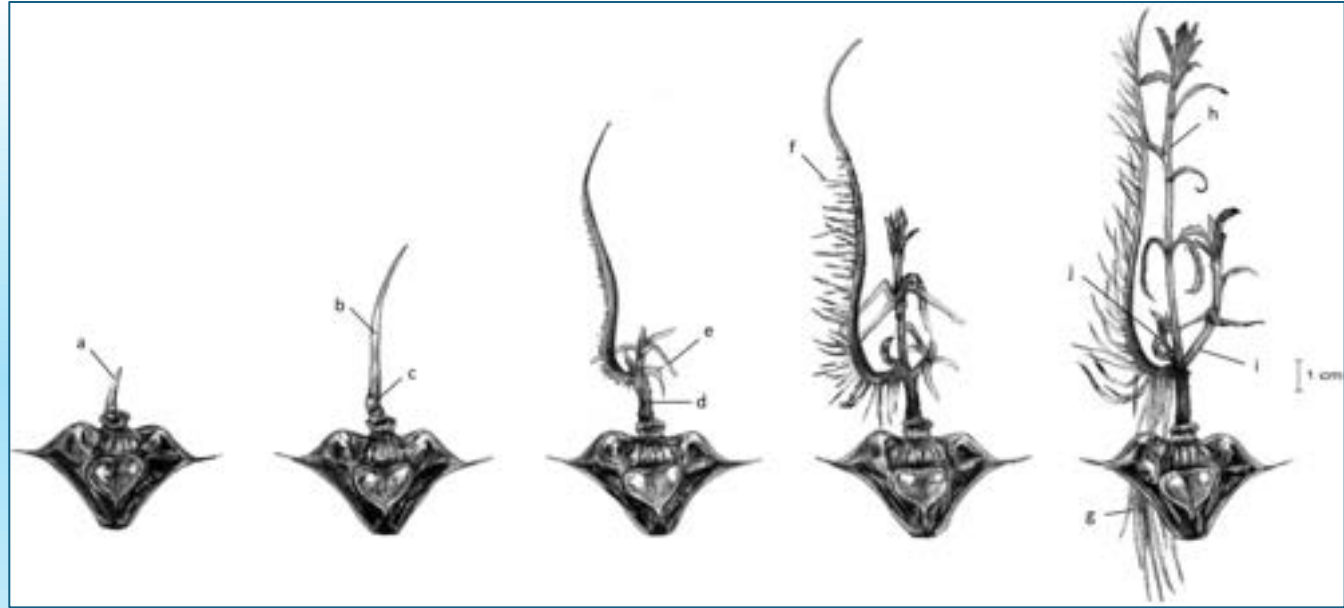
Joshua Tracy
Forester II

William Henley
Aquatic Resource Scientist



Overview

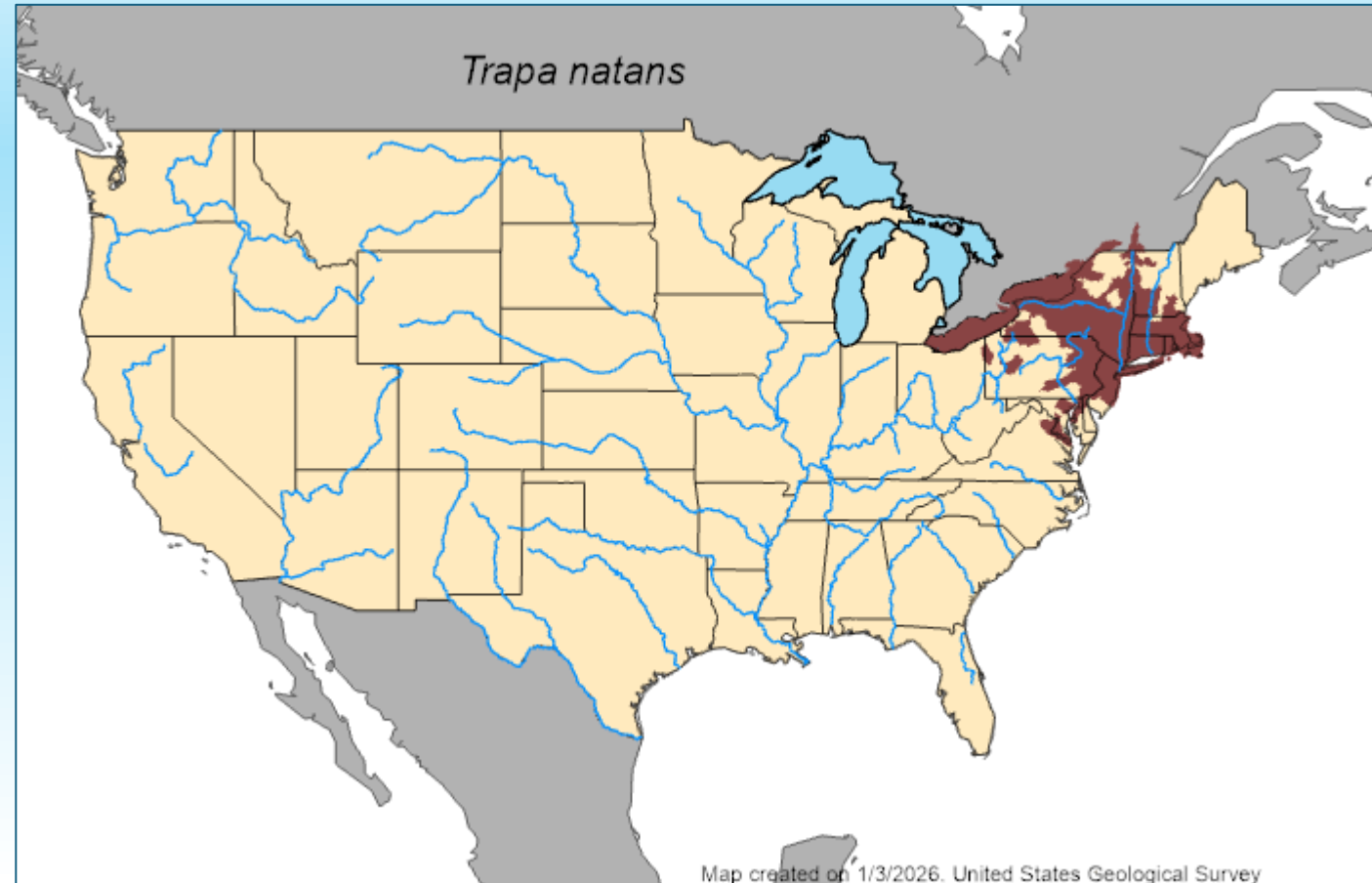
- Biology (quick)
- History (quick)
- Furnace Pond 2025
- Lake Whitney 2025
- Monitoring Efforts in 2026
- Management Efforts in 2026



Journal of Ecology, Volume: 112, Issue: 10, Pages: 2386-2420, First published: 19 July 2024, DOI: (10.1111/1365-2745.14372)

Trapa natans, Water Chestnut

- First introduced in 1870s to Potomac River
- Now found throughout the Northeast & Mid-Atlantic
- Native to Eurasia



Implications

- Aggressive invasive aquatic plant
- Reproduces exponentially due to seed & growth habit
- Grows in impenetrable mats
- Limits light reaching benthos and reduces oxygen content
- Increased waterbody sedimentation



Implications

- Extreme impairment to Furnace Pond
- Concerns about spread to nearby waterbodies; e.g., Lake Saltonstall
 - Hydrologically connected
 - Primary waterbody
 - Recreational fishery
- Trapa currently found only in small numbers



Saltonstall *T. Natans*
Risk Areas

23.4 acres high risk (depth <2.0 meters)
35.1 acres low risk (depth 2-4 meters)

Risk Level

High
Low



Meters
0 250 500 750

Regional Water Authority

CT Orthophotography (2016) with extracted bathymetric contours.
Map intended for planning purposes only; contains no authoritative data.



2006



2008



2010





2010



2012



2014





2014



2016



2018



Management Efforts

- Deployment of boom to prevent fragment spread
- Annual inspection of Lake Saltonstall to remove any individuals growing in waterbody





Management Efforts

- Annual mechanical harvesting efforts at Furnace Pond
- Aerial mapping efforts
 - UAS mapping of Furnace Pond to track management
 - UAS mapping of Pages Mill Pond (upstream) to assist watershed group with management efforts

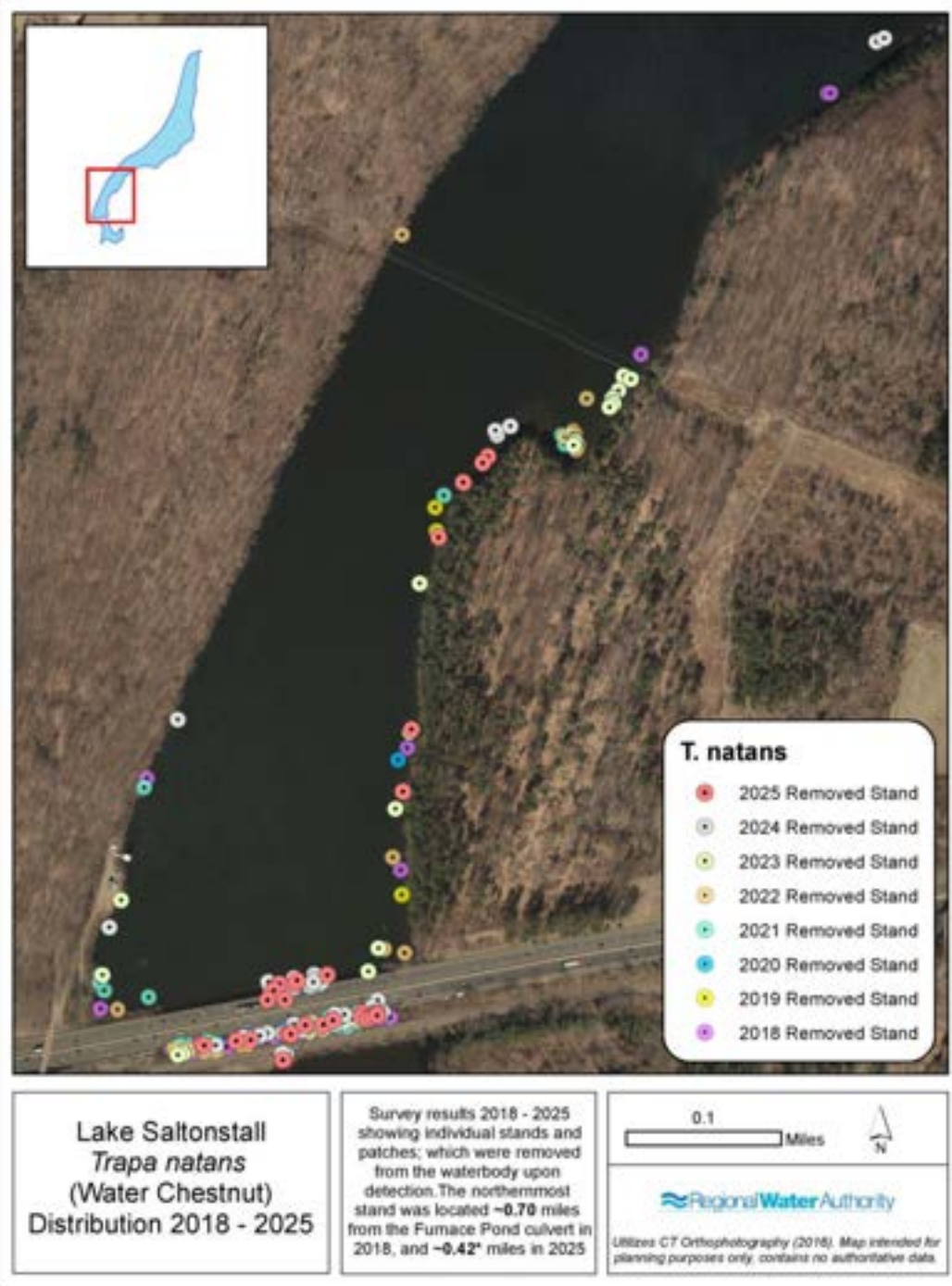
2025 Monitoring Efforts



- 39 individual plants or small groups of plants removed from Lake Saltonstall
- One individual at northern end of waterbody
 - Birds?
 - Diversion?

2025 Monitoring Efforts

- At southern end of waterbody, reduction in distribution and density of plants over prior years
- Secondary inspection later in July to ensure removal of all individuals



2025 Monitoring Efforts

Invasive Chestnut Control Locations 2025 Farm River, CT

- 1a. **Page's Mill Pond**
(motherload)
- 1b. 1 Mile of Farm River
below Page's Pond
2. Dean Heath
Farm Pond
3. Foxon Pond
4. Vaiuso Farm
Irrigation Ditches
5. Farm River at Rte. 1

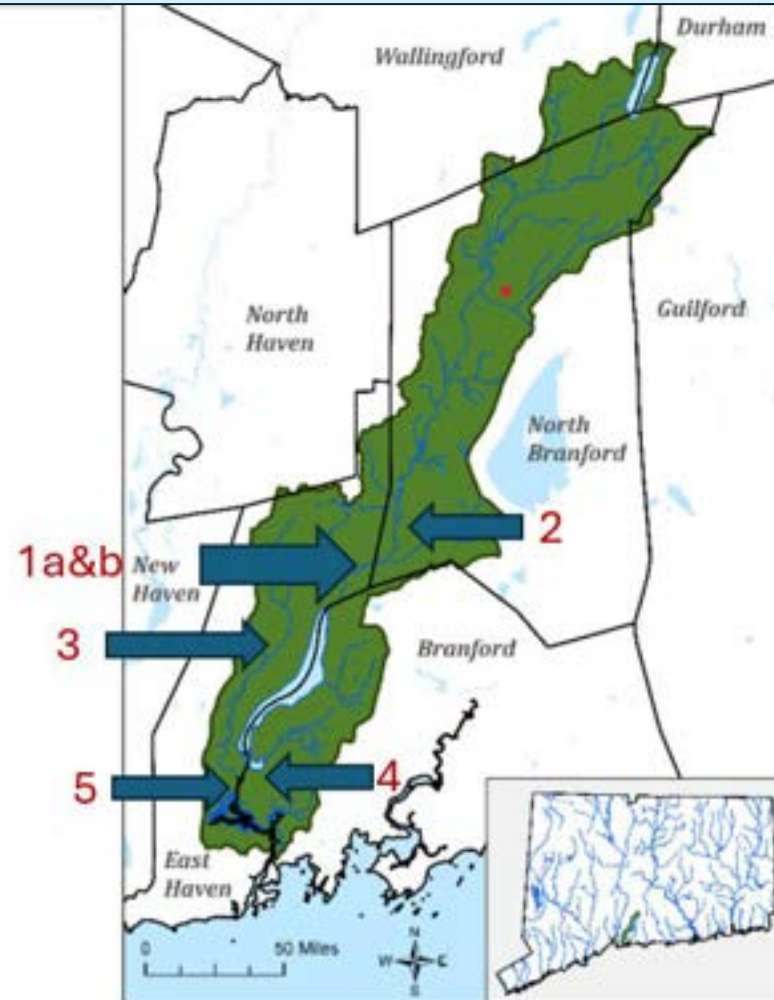


Figure 1-1. Farm River watershed

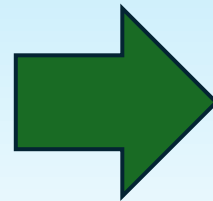
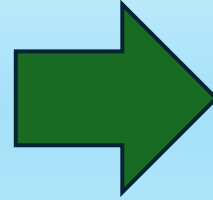
- Friends of the Farm River
- Conducting inspections and hand pulling across watershed
- Above and below Lake Saltonstall
- Report with findings shared by President
- RWA participation in mapping/inspection efforts

UAS Monitoring for Pages Mill Pond

- Assistance to Friends of the Farm River
- Conducting active management to Pages Mill Pond
- Hand removal at other sites



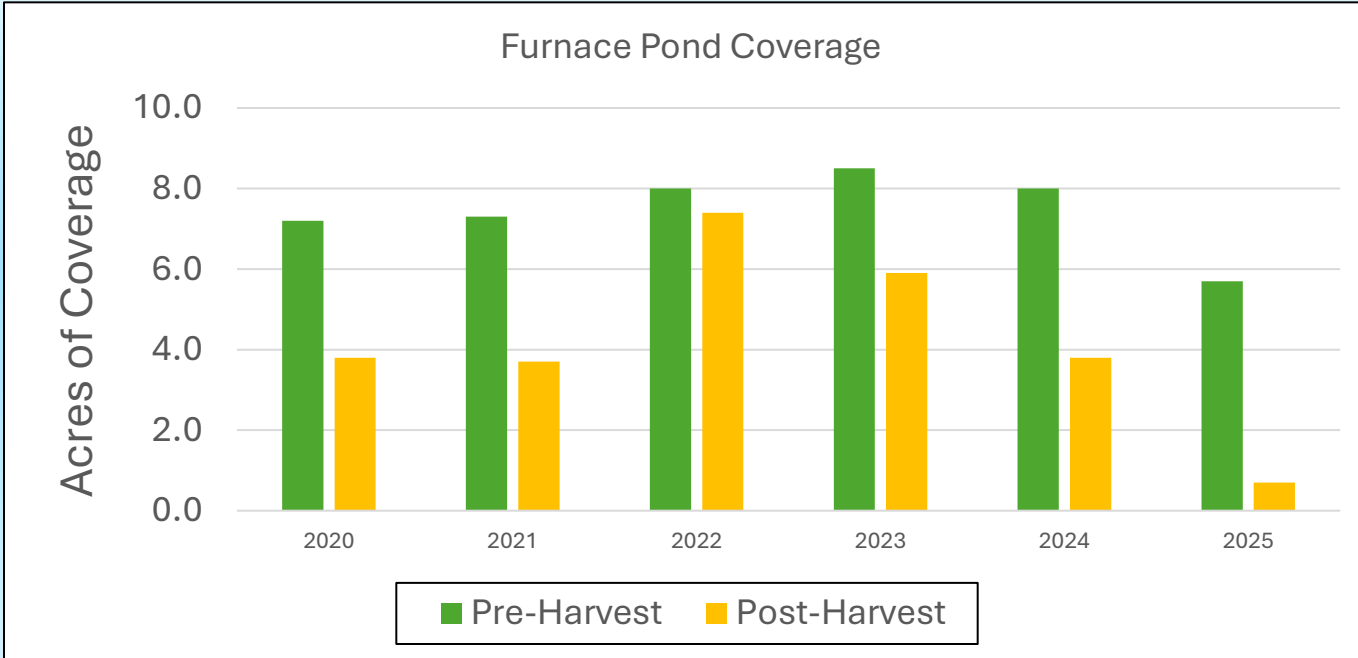
2025 Harvesting Efforts



2023 Baseline (“maximum”)



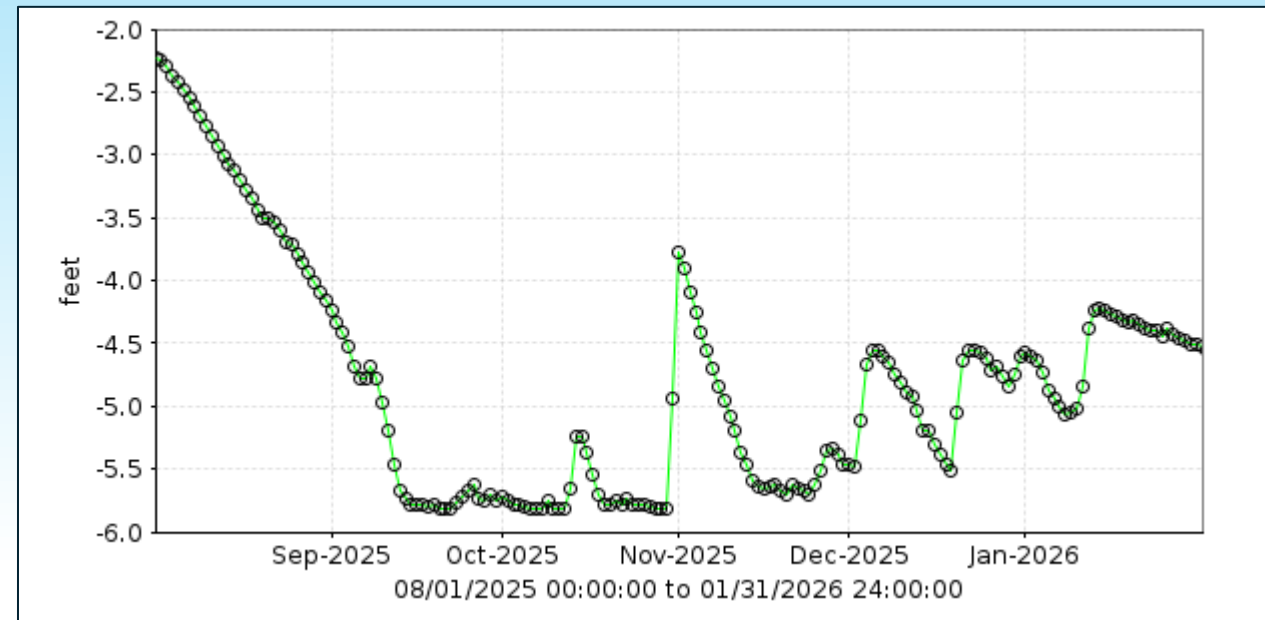
Project Progression



	Pre-Harvest	Post-Harvest
2020	7.2	3.8
2021	7.3	3.7
2022	8.0	7.4
2023	8.5	5.9
2024	8.0	3.8
2025	5.7	0.7

Optimistic 2026 Season

- Effective harvesting efforts in 2025 - most removal to date
- Extreme cold coupled with waterbody drawdown
- Dry conditions could hamper harvesting if they persist



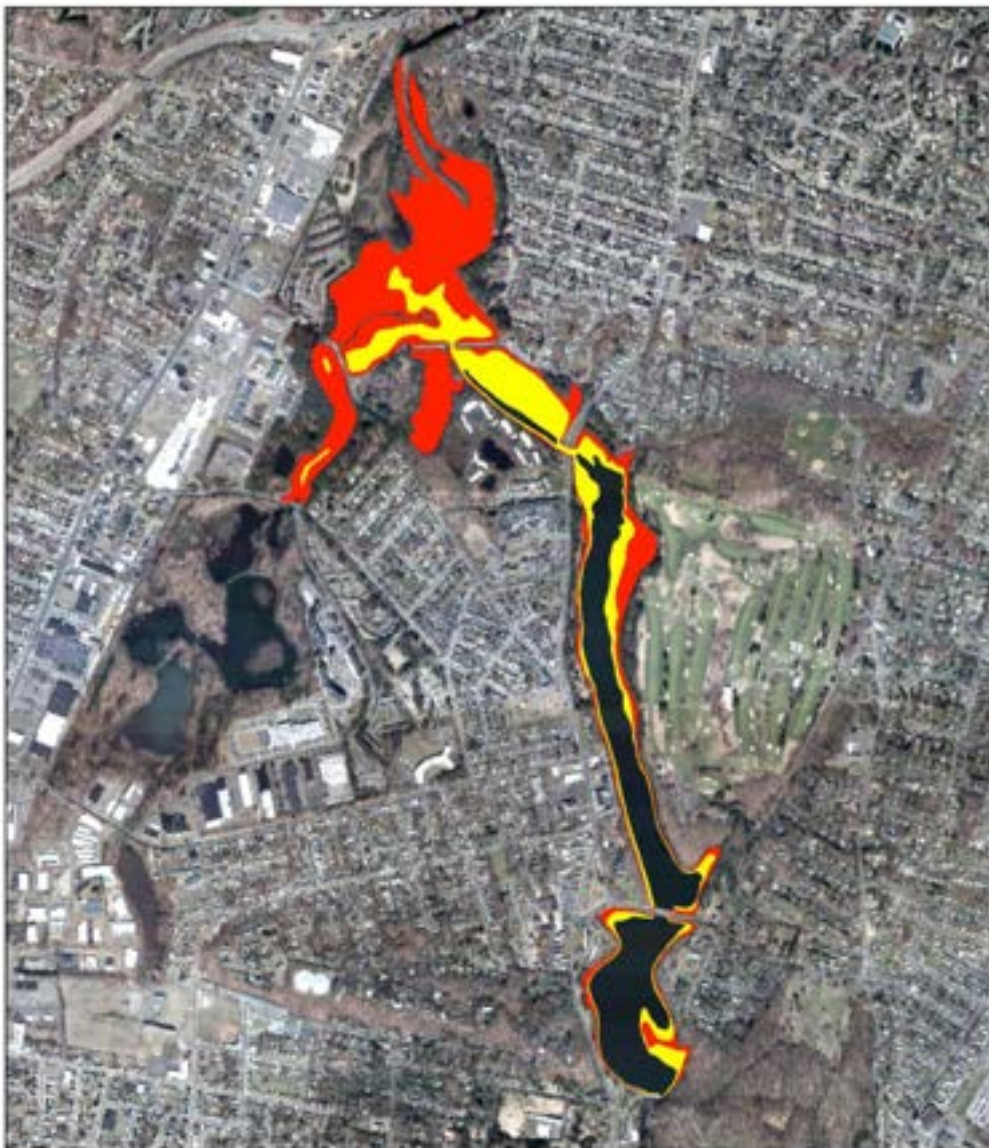
2025 Discovery in Lake Whitney



- Discovered on October 1st, 2025
- Upper basin accessible due to drawdown of ~2.0 feet
- Population size assessed and UAS mission conducted October 6th

Implications

- Significant portion of waterbody is “littoral” or shallow zone
- Flow through system promotes migration of plants to lower reaches
- Possibility for explosive expansion

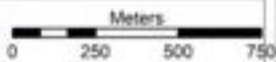


Whitney T. Natans
Risk Areas

73.7 acres high risk (depth <2.0 meters)
34.6 acres low risk (depth 2-4 meters)

Risk Level

- High
- Low



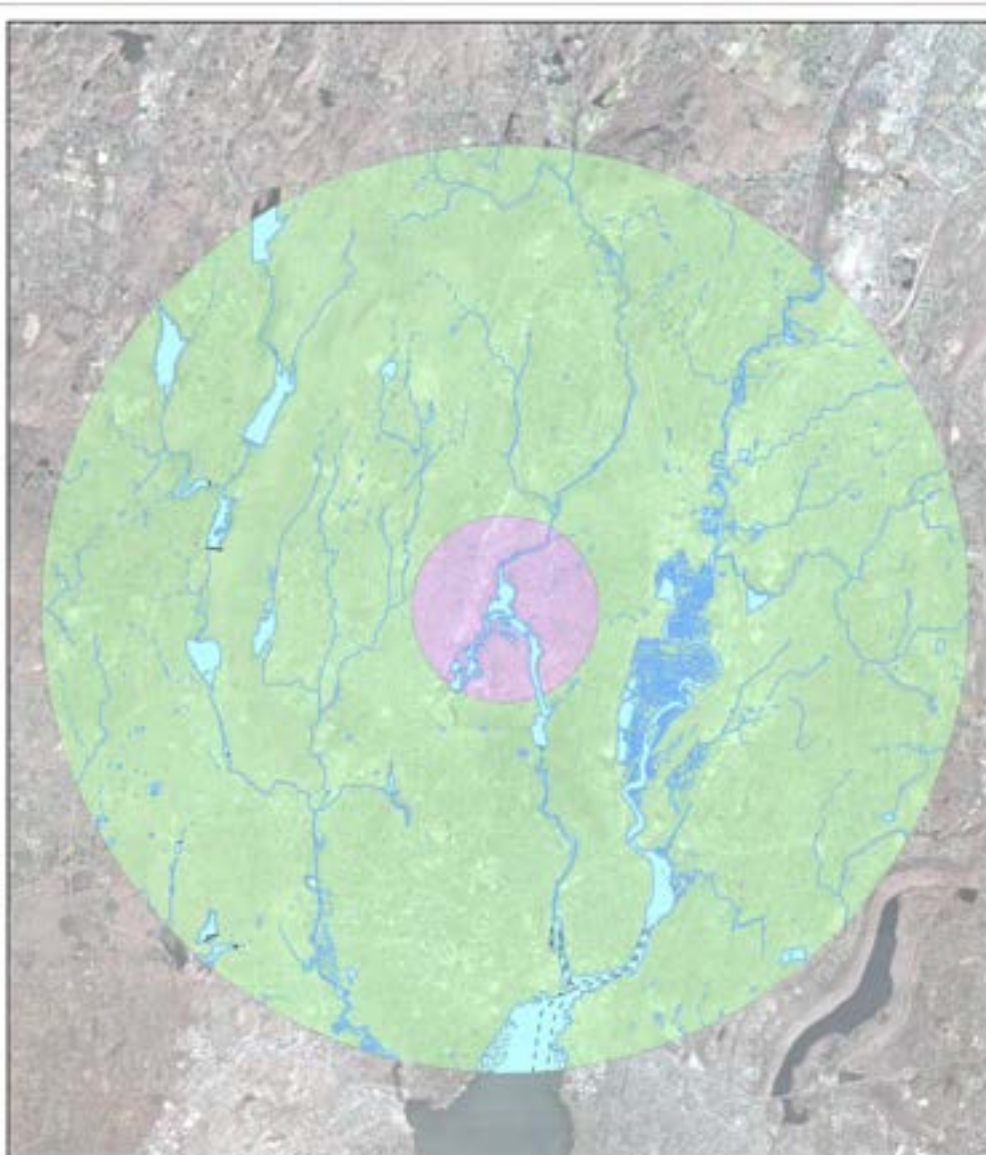
Regional Water Authority

CT Orthophotography (2021) with extracted bathymetric contours.
Map intended for planning purposes only.
contains no authoritative data.



Implications

- Numerous nearby waterbodies, including several stewarded by SCCRWA
- 21 waterbodies within 1 mile of detection site (~195 acres)
- 316 waterbodies within 5 miles of detection site (~1,100 acres)

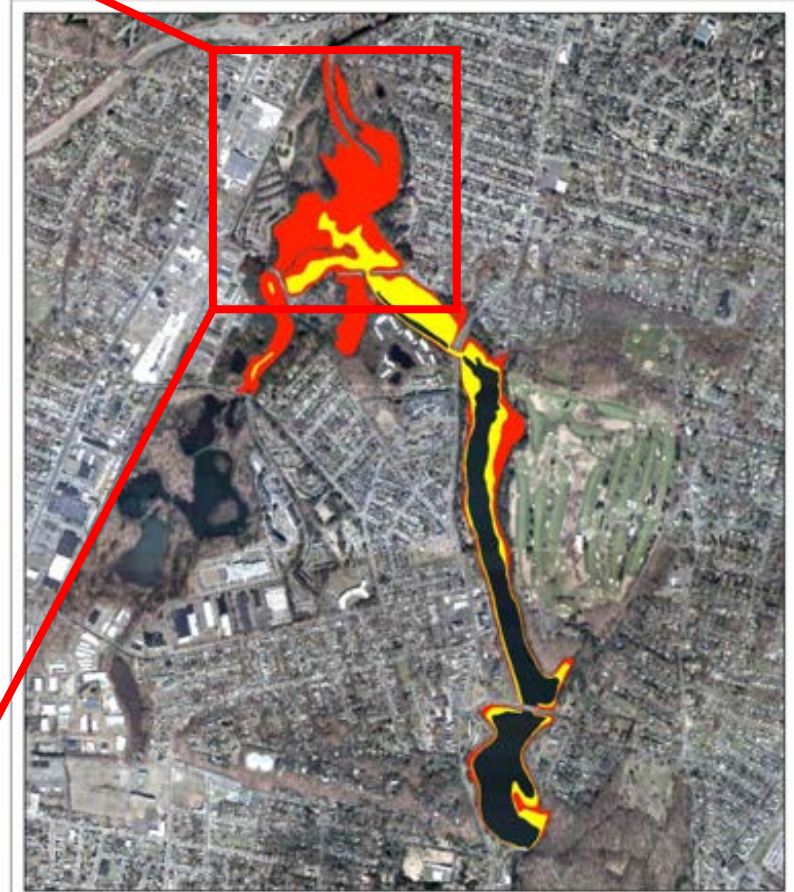
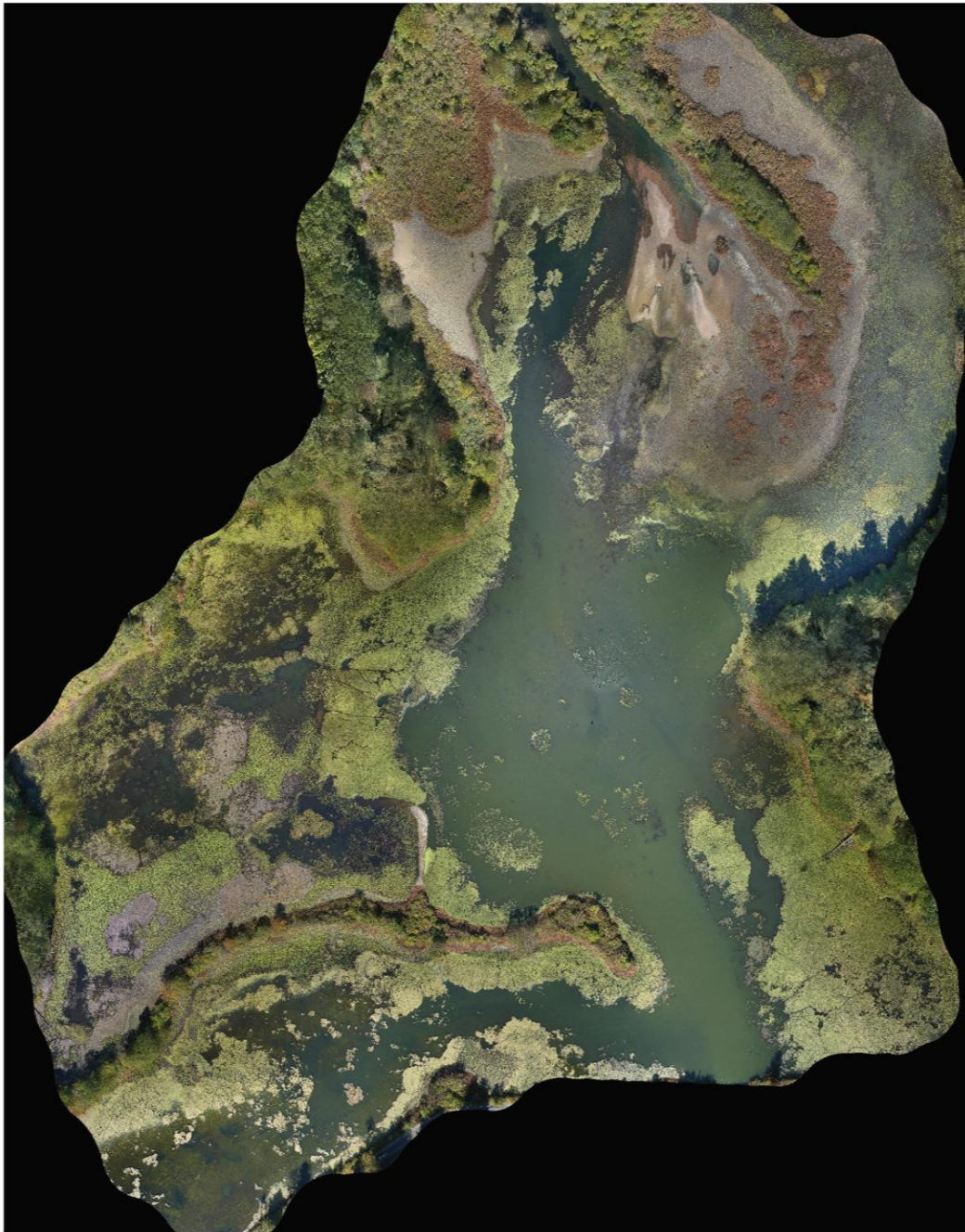


Whitney Spatially
Adjacent
Waterbodies



 Regional Water Authority

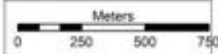
CT Orthophotography (2021) with extracted
bathymetric contours.
Map intended for planning purposes only.
contains no authoritative data.



Whitney T. Natans Risk Areas

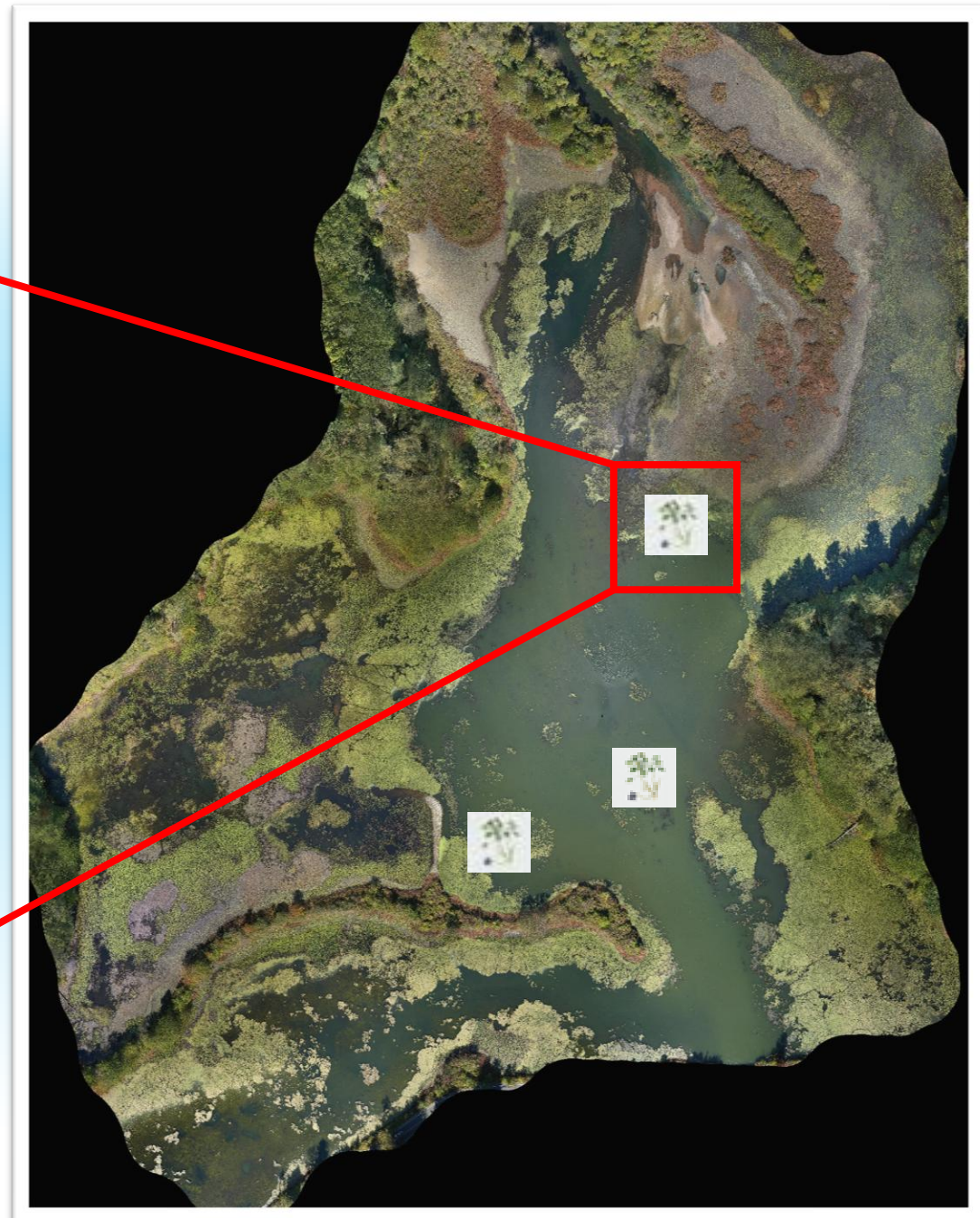
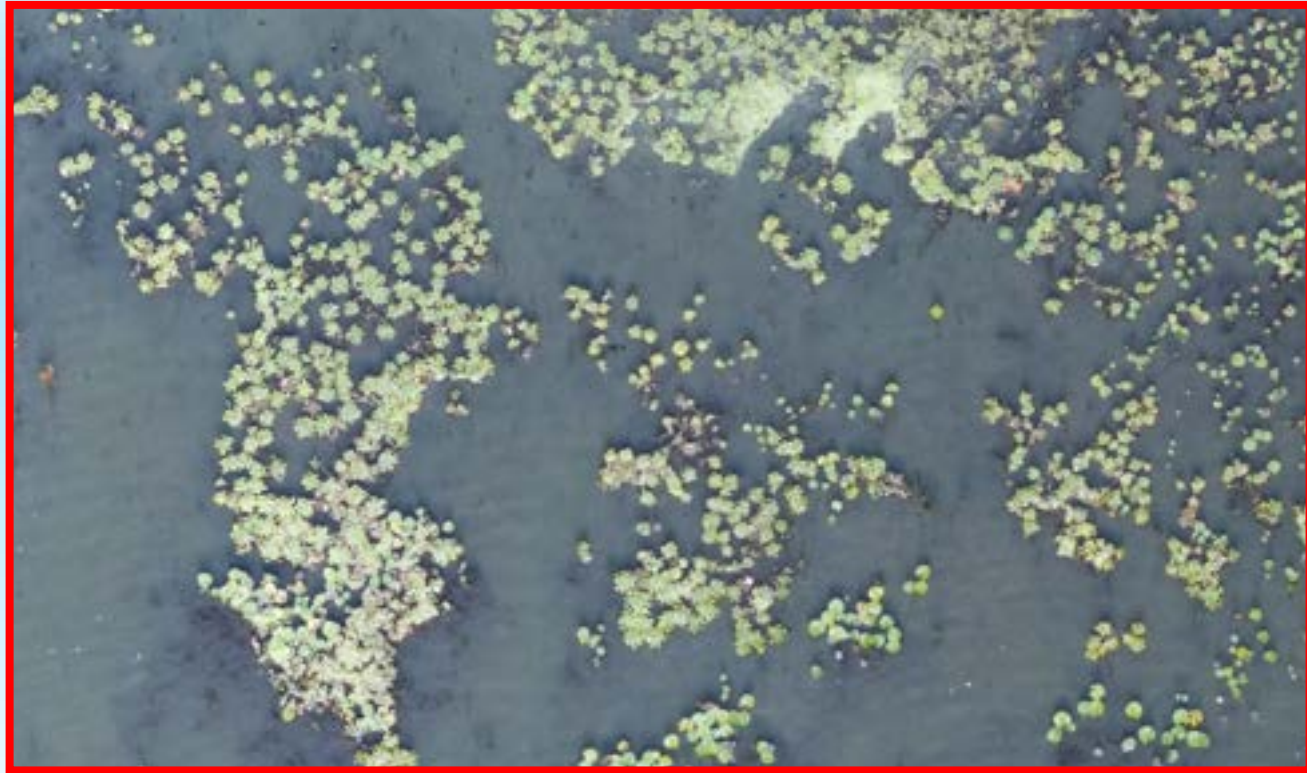
73.7 acres high risk (depth <2.0 meters)
34.6 acres low risk (depth 2-4 meters)

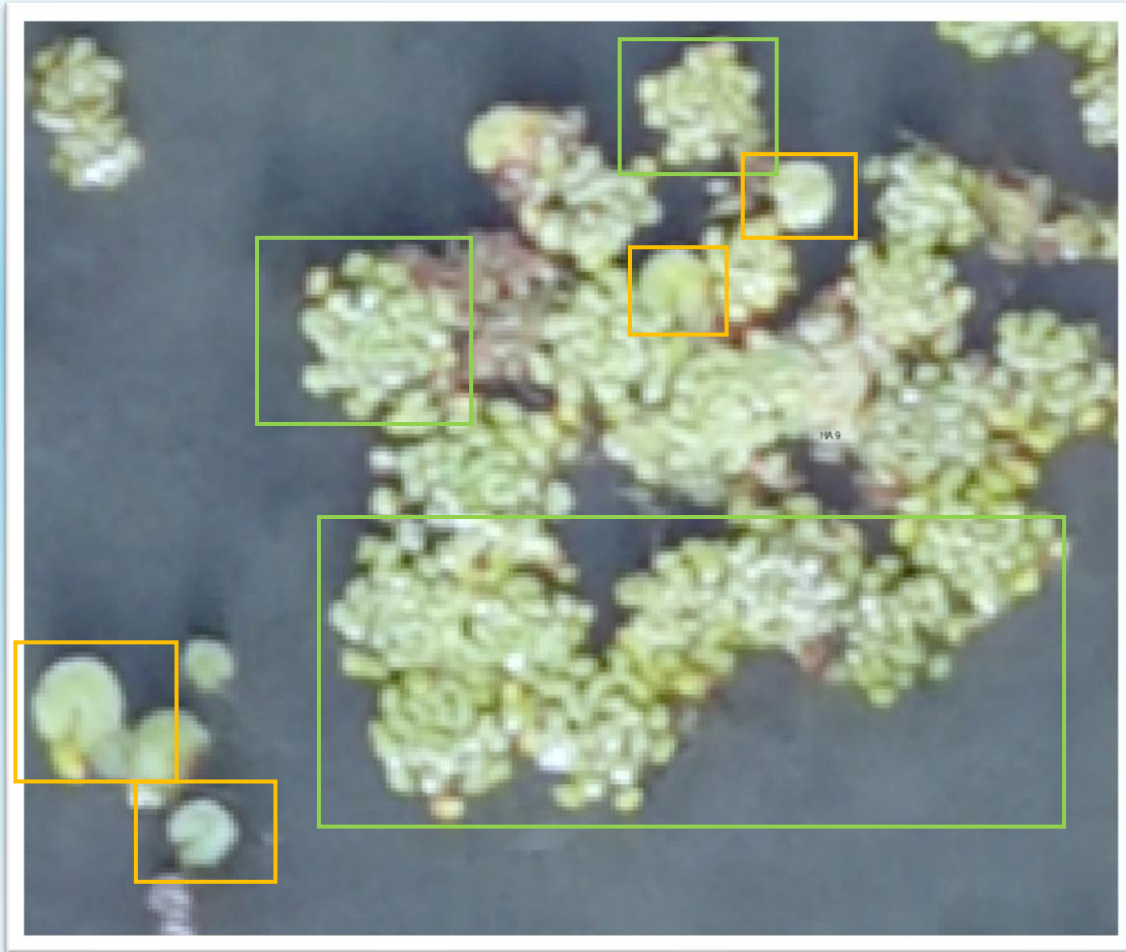
Risk Level
High
Low



Regional Water Authority

CT Orthophotography (2021) with extracted bathymetric contours. Map intended for planning purposes only. Contains no authoritative data.





Esri Image Analyst tool

- The Deep Learning toolset contains tools that detect specific features in an image and classify pixels in a raster dataset.
- The classification and pattern recognition tools perform regression analysis and prepare segmented rasters for use in creating classified raster datasets.

Management Planning



- Prepare boat launch on Lake Whitney Upper Basin
- Conduct UAS mapping for targeted removal
- More native biomass than Furnace Pond
- GOOD – not fully established yet

Management Plan

- Perform targeted mechanical harvesting
- Anticipate only a few days to remove all plants
- More expansive than can be “hand pulled” but not extensive
- Utilize amphibious vehicle due to shallow nature of upper basin



An aerial photograph of a green field, possibly a golf course, with a light-colored path or fairway running through it. The field is surrounded by dark green grass, and there are shadows cast by trees or structures outside the frame.

Thank you!
Questions?