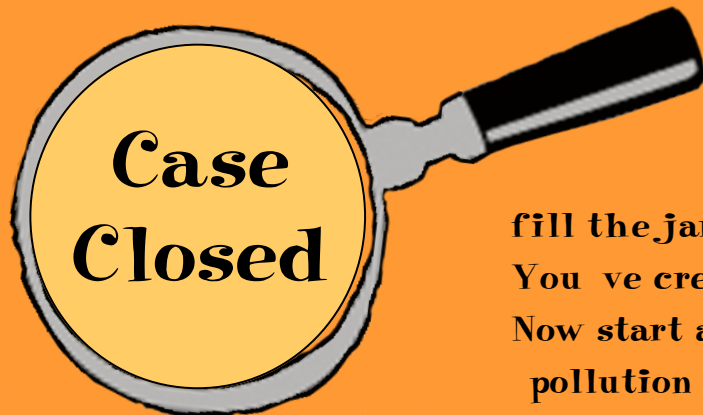


The perch in Polliwog Pond used to be plentiful. But recently, the people who fish there began to notice that there are fewer perch than last year. The pond looks a little strange, too. It's not as clear, and in areas there seems to be something growing on the surface. Along the edge of the pond, bottle caps and other trash occasionally wash up. What happened to the perch? And what is their environment really like

beneath the surface?

The Mystery of Polliwog Pond



Case Closed

Polliwog Pond is polluted, most likely by people as they go about their everyday business. To see what it's like to be a fish living in a polluted pond, try this experiment.

Cut a fish shape from a sponge. Thread a string through the top of the fish. Thread another string through the bottom and tie something heavy to it close to the fish; metal washers, a stone, or a magnet are just fine. Tie a pencil to the top string and lay the pencil across the top of the jar. While the fish is hanging in the jar,

fill the jar with water. You've created a mini-pond. Now start adding pollution to your pond. Use confetti made from a paper punch for trash. Add salt - that is the stuff used to melt ice on the roads during the winter. Lots of oil seeps into the pond from cars with leaky oil pans; pour some pancake syrup in the jar to represent oil. Then add some dirt. In your make-believe pond, this represents soil that is eroding into the pond from a house being built nearby.

What is happening to your fish as you add pollution to the pond? What is happening at the bottom of the pond?